

# PLG T8 Series

## Linear Fluorescent Lamp Replacement



### The PLG Linear LED Lamp System

PLG offers a wide variety of LED solutions to replace traditional linear fluorescent light sources. Products are UL and DLC listed\*, and can be compatible with existing ballast, wired directly to line voltage, or installed with a separate LED driver.

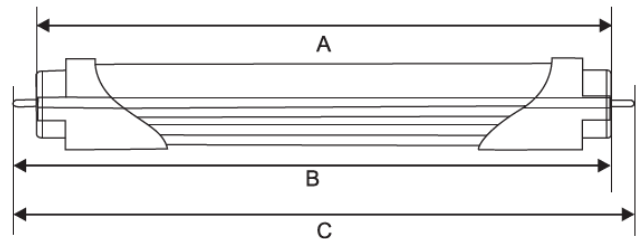
#### Features:

- High Power Factor > .90
- Low Total Harmonic Distortion < 25%
- High Efficacy, up to 150 lumens per watt
- High CRI > 80
- Long Life 50,000+ hours / 5 year warranty
- Wide beam angles available, up to 312 degrees
- Unified Glare Rating (UGR) < 19
- No UV or IR radiation
- Ballast compatibility list can be provided upon request
- Ballast bypass, direct line voltage input available in single sided or double sided input
- UL listed \*
- DLC Listed \*

\* All size, materials, and performance combinations may not be listed. Please reference listing agency to verify, or ask your PLG representative. Any combination not currently listed can be listed upon request.

#### Dimensions (typical):

- 2 Foot:
  - A = 23.15"
  - B = 23.44"
  - C = 23.74"
- 4 Foot:
  - A = 47.16"
  - B = 47.50"
  - C = 47.78"



19442 East Warner Road  
Mesa, AZ 85212

Phone: 480.218.6104  
Fax: 480.654.8374

Email: [info@PLGLED.com](mailto:info@PLGLED.com)  
Web: [PLGLED.com](http://PLGLED.com)

# Ordering Information:

Example: PLG-T8-NA-2-A/B-40-9

<u>PLG</u>	<u>T8</u>	<u></u>	<u></u>	<u></u>	<u></u>	<u></u>
Brand	Series	Material	Size (Ft)	UL Type	CCT	Wattage
PLG	T8	NA (Nanoplastic)	2	A (Ballast Compatible)	27	8
		AL (Aluminum)	3	B (Direct Line Voltage)	30	9
		GL (Glass)	4	C (External LED Driver)	40	10
			5	A/B (Dual Mode)	50	12
			6			15
			8			18
						22
						30
						40

## Specifications:

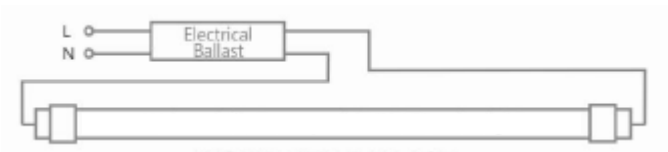
Brand	Series	Material	Size	UL Type	Wattage	Lumens	Efficacy	CRI	Input Volts
PLG	T8	NA	2	A	9	1250	140	80	120
				B	8	1250	156		
			4	A	12	1650	140		208
				B	10	1350	135		
					15	2000	135		
					A/B	10	1300		130
				12		1560	130		
				15		1950	130		
				AL	2	B	9		1170
		A/B	10			1350	135		
		3	B		13	1755	135	208	
		4	A/B		10	1300	130		240
					12	1560	130		
					15	1950	130		
					18	2340	130		
					22	2860	130		
		5	B		30	4050	135	277	
		6	B		30	4050	135		
		8	B		36	3300	110		
					40	5400	135		
		GL	2	A	6	800	130	80	120
					7.5	1000	130		
					9	1200	130		
				B	6	800	130		208
					7	800	115		
					9	1000	110		
				A/B	5	600	120		240
					7	800	115		
					9	1000	110		
			4	A	12	1600	130		240
					15	2000	130		
					18	2300	130		
				B	12	1600	130		277
					15	1800	120		
					18	2000	110		
				A/B	12	1350	112		
					15	1650	110		
					18	2000	110		



# Installation Overview:

## Ballast Compatible (UL Type A)

1. Turn power to luminaire OFF.
2. Verify existing ballast is compatible with lamp.
3. Verify existing luminaire is wired according to diagram on lamp.
4. Replace existing Fluorescent lamp with PLG LED lamp.
5. Install provided retrofit label that is clearly visible while re-lamping the fixture in order to prevent future re-lamping with incompatible materials
6. Turn on power and observe for proper operation before finishing installation.

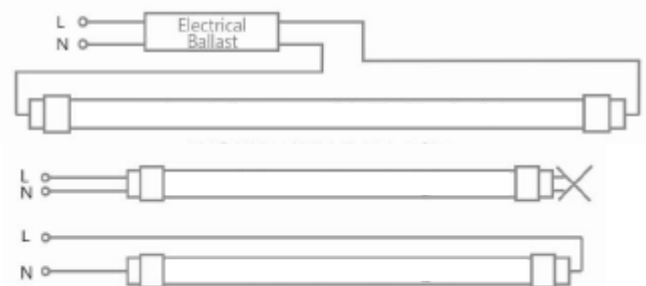


## Ballast Bypass (UL Type B)

1. Turn power to luminaire OFF.
2. Disconnect and remove existing fluorescent ballast.
3. Re-wire existing luminaire wiring per the wiring diagram on the lamp.
4. Replace existing Fluorescent lamp with PLG LED lamp.
5. Install provided retrofit label that is clearly visible while re-lamping the fixture in order to prevent future re-lamping with incompatible materials.
6. Turn on power and observe for proper operation before finishing installation.

## Hybrid (UL Type A/B)

1. Turn power to luminaire OFF.
2. Decide if lamp will be installed with existing ballast, or wired directly to line voltage and bypass the existing ballast.
3. Follow installation instructions per method selected in Step 2.
4. Install provided retrofit label that is clearly visible while re-lamping the fixture in order to prevent future re-lamping with incompatible materials.
5. Label must clearly indicate the method selected from Step 2.
6. Turn on power and observe for proper operation before finishing installation.



Go to [www.PLGLED.com](http://www.PLGLED.com) for video of a complete installation in under 5 minutes

# How to Order:

The PLG T8 series comes with several performance options. PLG can make the selection and specification process easy with our technical support and customer service. Products can be ordered the following ways:

1. Customer provides exact part numbers to PLG
2. Customer provides specifications to PLG, and PLG will recommend part number
3. Customer request a site survey and energy audit of their facility, and PLG provides a quote for comprehensive services



## Who We Are:



### LED Lighting Manufacturer

- Located In Mesa, AZ, All fixtures are assembled in house by our team of lighting technicians

### Electrical Contractor

- With a strong reputation of quality work in both new construction and maintenance, PLG is a Licensed, Bonded, and Insured electrical contractor whose been serving the American southwest lighting market for over 24 years



### Performance Based Contractor

- PLG Guarantees results for energy and maintenance savings by performing in house energy audits, utility rebate processing, and photometric designs.



19442 East Warner Road  
Mesa, AZ 85212

Phone: 480.218.6104  
Fax: 480.654.8374

Email: [info@PLGLED.com](mailto:info@PLGLED.com)  
Web: [PLGLED.com](http://PLGLED.com)